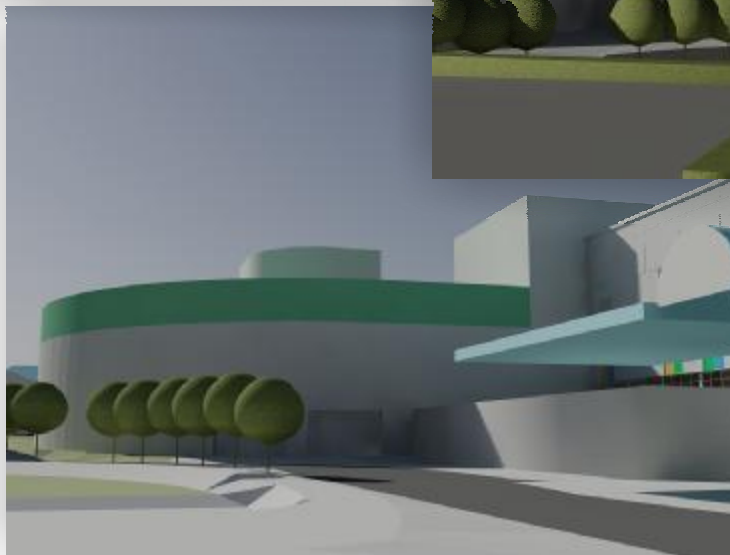


Paediatric Theatres Southampton General Hospital

Following on and adjacent to the completed H and J theatres, the Trust required a dedicated pair of theatres for Paediatrics, along with the support facilities and its own 5 bed recovery. There is also an adjacent area currently proposed for a future Paediatric Day Unit.



CLIENT: SUHT

LOCATION: SGH

COMPLETION: October 2008

VALUE: £ 5,000,000

